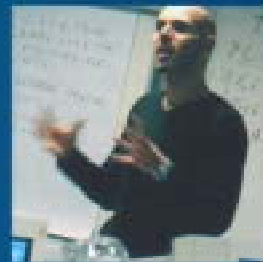


MSc Corporate Governance



Become what you want to be

MSc Corporate Governance

Duration: 18 months (P/T)

Entry requirements: ICSA qualification awarded by MAICSA

NB: The course is taught entirely in English by academic staff from the UK, and successful completion of the module assessments and the dissertation requires a high level of proficiency in the English language. Applicants will, therefore, be required to demonstrate the required level of proficiency in English. Admission interviews will be conducted jointly by LSBU and MAICSA in Kuala Lumpur. The general level of an applicant's proficiency in English will be assessed at the time of interview, and those who have not already obtained a suitable IELTS or TOEFL score may, if considered necessary, be asked to appear for a special English language test conducted by LSBU. The interview panel may also, if considered desirable, advise applicants to undergo an English language course prior to undertaking the programme.

Location: MAICSA's main office: No 57 The Boulevard, Mid Valley City, Lingkaran Syed Putra, 59200 Kuala Lumpur, Malaysia

Principal Lecturer: Mr Vijay Lee
(00 44) 20 7815 7715 – mscrg.enq@lsbu.ac.uk

LSBU's MSc Corporate Governance degree is intended for students interested in acquiring the specialist knowledge and skills required for pursuing a career as a Corporate and/or Governance Secretary. Studying for this degree gives you the opportunity to research in the fast developing and intellectually stimulating area of

Members and graduates of MAICSA are now eligible for a fast track route to the MSc Corporate Governance, being required to obtain only six credits. Two of these credits are to be obtained through two taught units, delivered through seminars conducted in Kuala Lumpur by LSBU lecturers; the remaining four by completion of the Masters' dissertation, electronically facilitated by London based dissertation facilitators

corporate governance. The course blends the academic and professional perspectives on the subject with a view to develop knowledge and skills appropriate for reflective practitioners and researchers in the area of corporate governance. The course links academic theory with professional practice.

Career prospects

Students who have successfully completed this course have generally been successful in terms of professional employment. Our past students are well placed in diverse areas such as :

- the Governance Secretary of a London university
- the Company Secretary of several overseas subsidiaries of a major multinational petrochemicals company

- the Company Secretary of one of the largest brewing firms in the world
- a self employed secretarial consultant with a small but growing consultancy practice

In relation to students on the part time mode, some employers show the value they attach to the qualification by paying the course fees for their employees. This is true of the student who was recently awarded the prize given by the Livery Company of Chartered Secretaries for best overall performance in relation to the eight taught units of the course for the year 2004. This student is currently training as Assistant Company Secretary at a leading international law firm.

COURSE CONTENT OVERVIEW

Course units	Period & mode of delivery	Assessment
Corporate Governance Theories & Issues	Six six hour sessions over six days in December	Coursework assignment to be completed in January
Research Methods & Methodology	Six six hour sessions over six days in March/April	Dissertation proposal of around 5,000 words to be completed in May/June
Dissertation	Electronically facilitated research over a 10 month period from July to May	Masters dissertation of around 15,000 – 20,000 words to be submitted in May



SIVA YAMINI SIVAPERUMAN

Yamini, from Kuala Lumpur, completed her MSc with distinction at LSBU in 2005 and has been recommended for the prize awarded by the Worshipful Company of Chartered Secretaries and Administrators, UK. She is now taking up an assignment with the Entrepreneurial Growth Markets Business Unit of Ernst & Young's Assurance & Advisory Business Services Division in Sydney, Australia.

"I chose to do a Masters in Corporate Governance because it was the 'in thing', both globally and locally – there was no such course available in Malaysia. As I was already a qualified CPA, an MSc was the perfect additional qualification to help me achieve my ambition of being a career auditor. I was very impressed by the professional approach of some of the lecturers, particularly in the module 'Corporate Governance Theories & Issues'. It was very well organised and the use of presentations, case study discussions and video clips on current high profile cases, from both the US and UK, made the course lively and interesting. The 'Blackboard' virtual learning site was a valuable discussion platform for the lecturers and students to communicate electronically. Delivery of the programme in Malaysia will certainly be a great opportunity for MAICSA graduates."

Fast track route for MAICSA members and graduates

The MSc normally requires students to obtain 12 credits – eight of which are obtained by the study of eight taught units, and the remaining four by completion of a Masters' dissertation in the area of corporate governance. However, LSBU has developed a special fast track route for members and graduates of The Malaysian Institute of Chartered Secretaries and Administrators (MAICSA), in keeping with the University's policy of enriching educational opportunity and experience.

Members and graduates of MAICSA are now eligible for a fast track route to the MSc Corporate Governance, being required to obtain only six credits. Two of these credits are to be obtained through two taught units, delivered through seminars conducted in Kuala Lumpur by LSBU lecturers; the remaining four by completion of the Masters' dissertation, electronically facilitated by London based dissertation facilitators.

Students who obtain an overall average mark of more than 70%, which should normally include a mark of over 70% in their dissertation, will receive an MSc with distinction.

Learning facilities

In addition to the books, journals and reference materials available in MAICSA's library, students will have full electronic access to the 'Blackboard' learning websites in respect of the taught units, and to LSBU's impressive stock of e-journals dedicated to the subjects of management and governance.

CORE UNITS: IN PROFILE

Corporate Governance Theories & Issues: provides students with an insight into modern day corporate governance issues. It illustrates the origins of the current high profile debate and gives students an understanding and awareness of the major reports which have been published on the subject, together with an exposure to the related organisational and ethical issues, which face the corporate governors and their organisations today.

Unit Coordinator: Mr Michael Knight

Research Methods & Methodology:

provides students with a critical understanding of the main methods of research and develops their abilities to use a variety of research sources. Students on this course will focus on the nature, approaches, methods, tools and techniques of research within the broad domains of corporate governance. The unit attempts to develop much of the knowledge and skills required to complete a Master's level research focused dissertation and, to this end, it concludes with students writing a 5,000 word research proposal on the topic that they have chosen for their research.

Unit Coordinator: Dr Kenneth D'Silva

Dissertation: the dissertation unit requires completion of a Masters' level dissertation of about 15,000 to 20,000 words in an area consistent with, and appropriate to, the subject area of corporate governance. It requires, and provides an opportunity for, the student to virtually independently conceive, plan and execute an appropriate piece of research at Masters' level, based on firm academic foundations. Students will be expected to integrate and apply, in a productive and disciplined manner, some of the concepts, insights, information and skills obtained from or derived within, the taught units of the Masters' degree.

Unit Coordinator: Mr Joe Adomako, supported by a team of dissertation facilitators

COURSE FEES 2006/07

Corporate Governance Theories & Issues	£925
Research Methods	£925
Dissertation	£850
Administrative charge for delivery in Kuala Lumpur	£300
Total	£3,000*

*As fees are liable to be change each year, applicants are advised to contact MAICSA for the most up-to-date information.

MSc Corporate Governance



www.lsbu.ac.uk

COURSE ENQUIRIES

020 7815 7815

020 7815 8273 (fax)

www.apply.lsbu.ac.uk

London South Bank University

London South Bank University's origins date back to 1808, when the British government established the Borough Road College. This became the Borough Polytechnic in 1892 and, along with several other polytechnics, it was redesignated as a university in 1991. It is one of the largest non-collegiate universities in the UK and offers degree, diploma and postgraduate courses to more than 18,000 students.

The University's Faculty of Business, Computing & Information Management itself has over 8,000 students, and is one of the largest business schools in the UK. The Faculty prides itself on the academic and professional qualifications of its staff. Apart from the Faculty's traditional core expertise in accounting, finance, management and law, three members of the course team – one of whom has been a member of the University's Board of Governors for the last eight years – are actively engaged in research in the specific area of corporate governance. Some staff members have also been involved in educational consultancy work with ICSA, thereby developing an intimate knowledge of the breadth and depth of understanding of the subject areas that are considered ideal by the professional body – such knowledge facilitates the successful fusion of academic and professional perspectives, which this programme seeks to achieve, and which is sought to be further developed by the Faculty's Centre for Research in Accounting, Finance and Governance.

Your acceptance of a place is expressly subject to the terms and conditions contained in or referred to in the statement in the University's prospectus headed 'The University and you'. Recruitment to each of the courses is governed by the University's rules which are summarised in the prospectus. Course content will develop and change as knowledge and experience in the area evolve.

London South Bank University is a charity and a company limited by guarantee

Registered in England no. 986761. Registered office: 103 Borough Road, London SE1 0AA